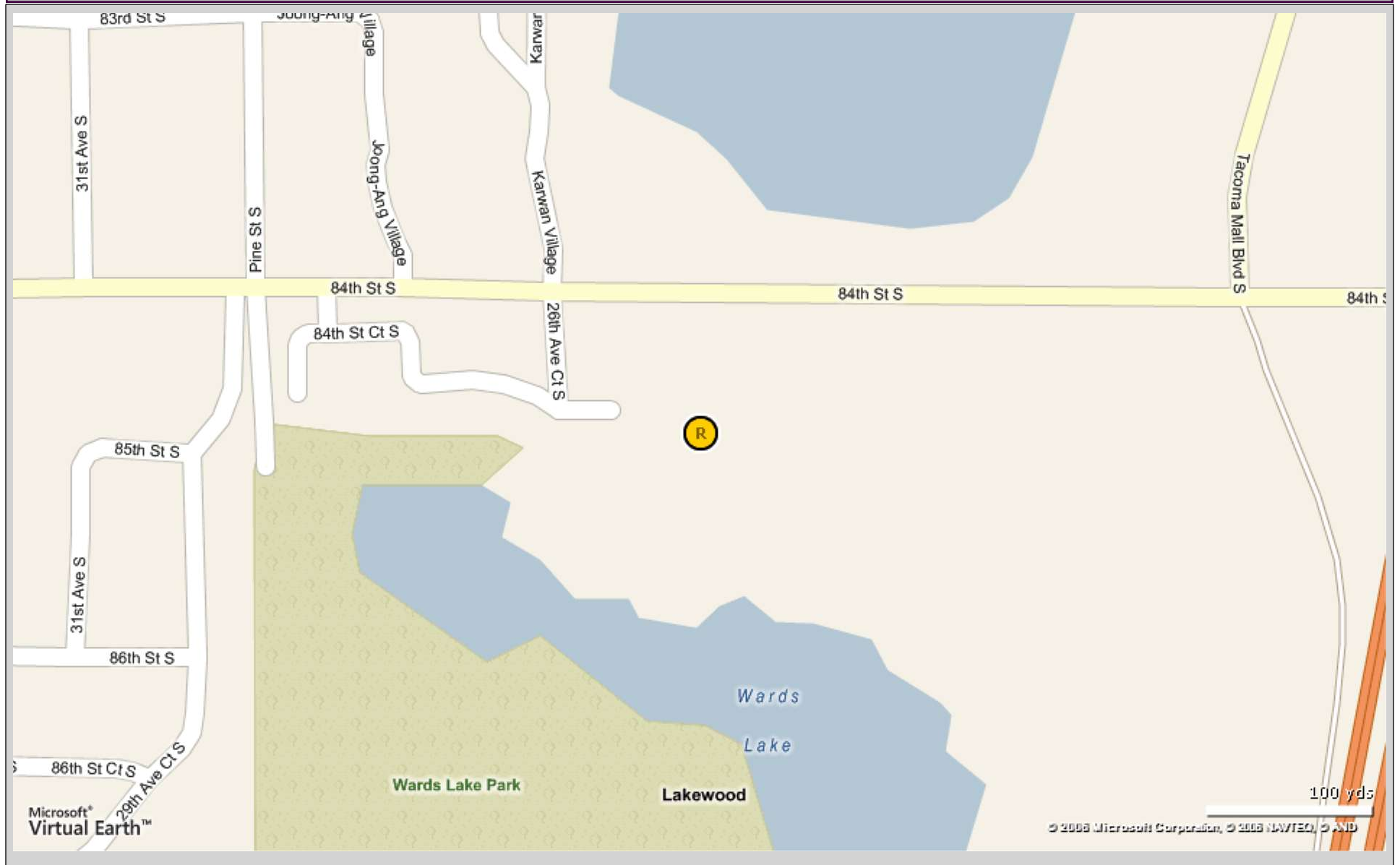


Aerial / Map Report

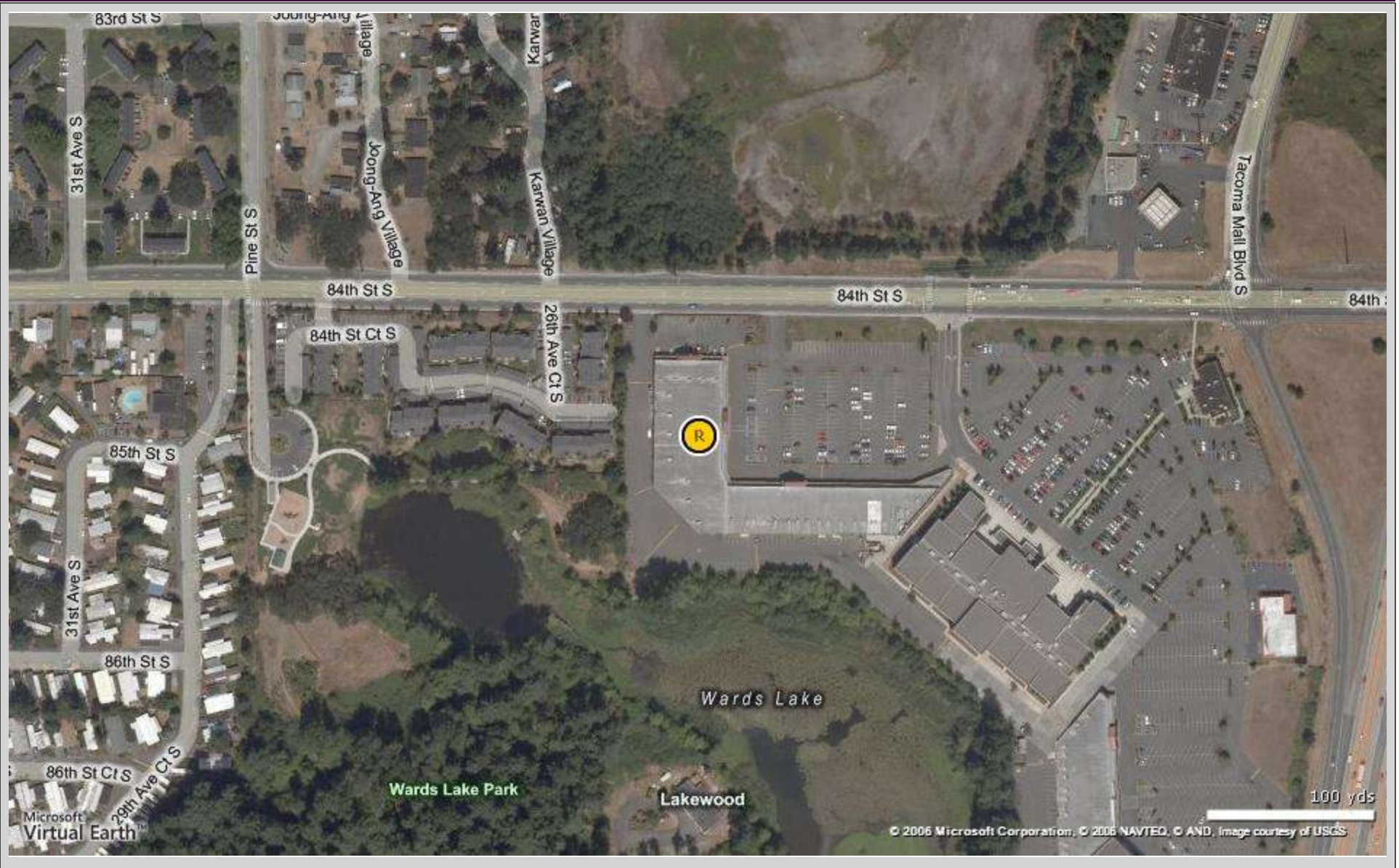
Bldg E

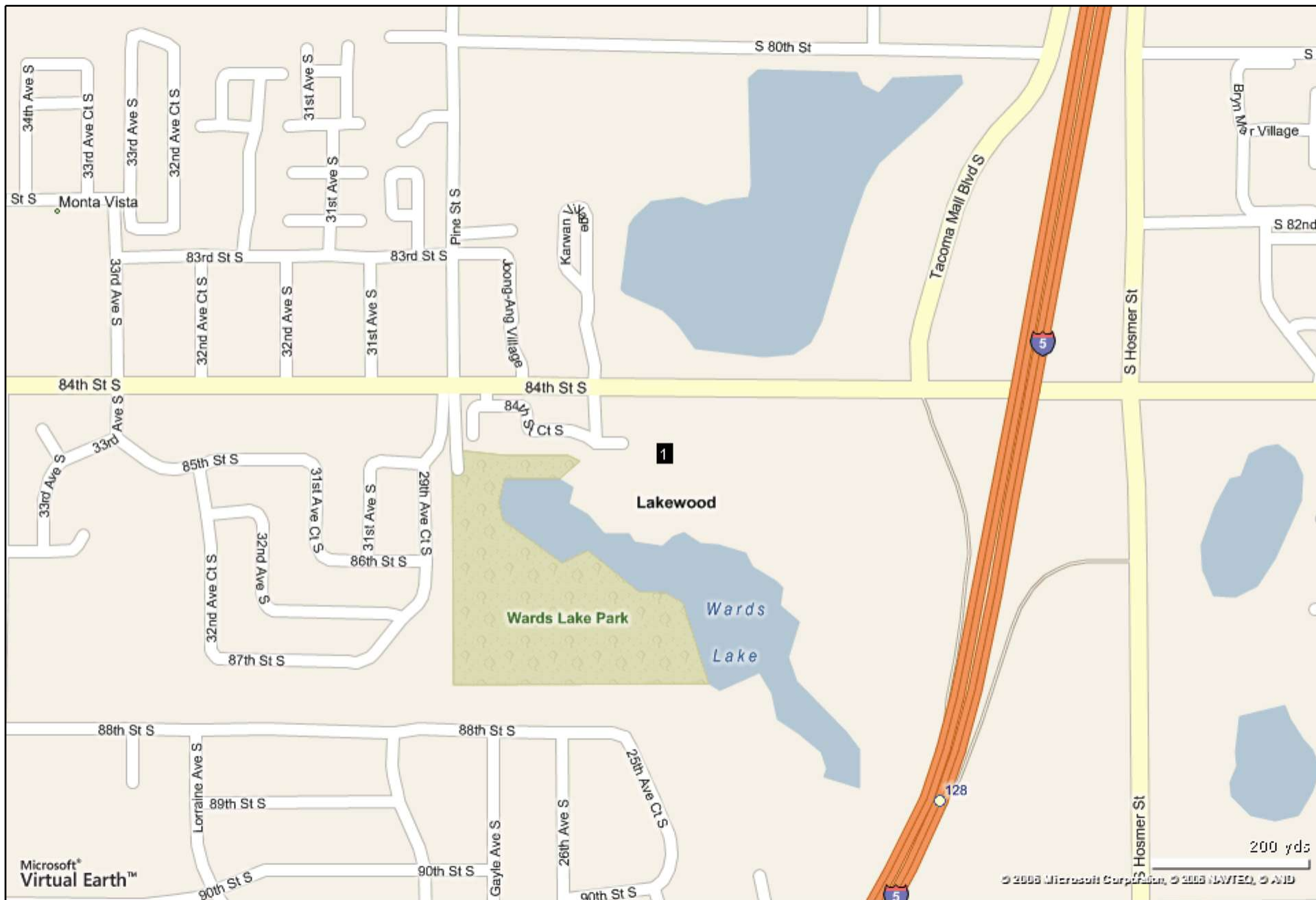
2510 84th St S - Tacoma, WA 98409



Bldg E

2510 84th St S - Tacoma, WA 98409





Consumer Spending Report

Bldg E

2510 84th St S, Tacoma, WA 98409

Building Type: **Retail**
 Secondary: -
 GLA: **37,248 SF**
 Year Built: **1988**
 Total Available: **1,053 SF**
 % Leased: **97.17%**
 Rent/SF/Yr: **\$16.00**



2009 Annual Spending (in Thousands)	1 Mile	3 Mile	5 Mile
Total Specified Consumer Spending	\$158,027	\$1,274,759	\$3,027,329
Total Apparel	\$5,745	\$45,820	\$108,524
Women's Apparel	2,255	18,254	43,534
Men's Apparel	1,362	10,930	25,903
Girl's Apparel	512	4,094	9,703
Boy's Apparel	412	3,283	7,703
Infant Apparel	438	3,388	7,865
Footwear (excl. Infants)	908	7,176	16,924
Other Apparel Prod/Services	766	5,870	13,816
Total Entertainment	\$13,673	\$111,622	\$267,555
Sports and Recreation	602	4,927	11,715
TV, Radio and Sound Equipment	5,143	41,288	97,522
Reading Materials	648	5,322	12,802
Travel	7,091	58,551	141,871
Photographic Equipment	188	1,534	3,644
Total Food At Home	\$13,291	\$106,036	\$251,734
Cereal Products	840	6,674	15,778
Bread & Bakery Products	1,730	13,943	33,138
Seafood	679	5,395	12,930
Meat/Poultry/Fish/Eggs	4,575	36,414	86,233
Dairy Products	2,150	17,226	40,819
Fruits and Vegetables	3,317	26,384	62,836
Total Food Away From Home	\$13,387	\$107,348	\$253,864
Breakfast and Brunch	1,321	10,438	24,714
Dinner	6,156	49,632	117,467
Lunch	4,482	35,859	84,452
Snacks and Non Alcoholic Bev	1,063	8,394	19,655
Catered Affairs	365	3,025	7,577

Consumer Spending Report

Bldg E			
2510 84th St S, Tacoma, WA 98409			
Annual Spending (in Thousands)	1 Mile	3 Mile	5 Mile
Total Alcoholic Beverages	\$2,577	\$20,611	\$48,349
Alcoholic Bev. at Home	1,438	11,511	27,166
Alcoholic Bev. away from Home	1,139	9,100	21,183
Total Furniture/Appliances	\$14,457	\$117,861	\$281,932
Bedroom Furniture	889	7,088	16,763
Living Room Furniture	1,268	10,315	24,629
Other Living & Family Room Furniture	328	2,705	6,519
Other Furniture	126	1,051	2,553
Major Appliances	1,128	9,322	22,556
Small Appliances	3,050	24,802	59,166
Misc Household Equipment	7,668	62,578	149,746
Total Transportation/Maint.	\$78,338	\$629,576	\$1,491,160
New Autos/Trucks/Vans	9,846	80,817	194,625
Used Vehicles	9,349	73,280	170,663
Purchase of RVs or Boats	905	7,695	18,792
Gasoline	11,268	90,337	212,573
Diesel Fuel	168	1,360	3,270
Automotive Maintenance/Repair	3,860	31,092	73,933
Transportation	42,942	344,996	817,303
Total Health Care	\$6,396	\$52,985	\$127,017
Medical Services	3,666	30,283	72,600
Prescription Drugs	2,125	17,712	42,441
Medical Supplies	604	4,990	11,977
Total Education/Day Care	\$11,930	\$97,823	\$232,880
Education	5,286	43,258	103,074
Room and Board	433	3,738	9,176
Tuition/School Supplies	4,761	38,989	92,937
Day Care, Nursery & Preschool	1,451	11,837	27,694

Daytime Employment Report

1 Mile Radius

Bldg E
2510 84th St S, Tacoma, WA 98409

Building Type: **Retail** Total Available: **1,053 SF**
 Secondary: - % Leased: **97.17%**
 GLA: **37,248 SF** Rent/SF/Yr: **\$16.00**
 Year Built: **1988**



Business Employment by Type	# of Businesses	# Employees	#Emp/Bus
Total Businesses	601	6,818	11
Total Retail	194	3,243	17
Home Improvement Stores	10	390	39
General Merchandise Stores	7	34	5
Food Stores	16	68	4
Auto Dealers and Gas Stations	32	1,915	60
Apparel and Accessory Stores	16	31	2
Furniture and Home Furnishings	19	101	5
Eating and Drinking Places	52	548	11
Miscellaneous Retail Stores	42	156	4
Finance-Insurance-Real Estate	66	307	5
Banks, Saving and Lending Inst.	13	43	3
Security Brokers and Investments	5	10	2
Insurance Carriers and Agencies	8	70	9
Real Estate-Trust-Holding Co.	40	184	5
Services	238	1,911	8
Hotels and Lodging	17	305	18
Motion Picture and Amusement	15	187	12
Health Services	26	267	10
Legal Services	5	10	2
Educational Services	13	258	20
Auto Services	27	156	6
Other Services	135	728	5
Agriculture/Mining	5	66	13
Construction	24	102	4
Manufacturing	16	91	6
Transportation, Comm./Pub Util.	19	487	26
Wholesale Trade	32	588	18
Government	7	23	3
Daytime Population	6,818		
Daytime Population/Business	11		
Residential Population	16,174		
Residential Population/Business	27		

Demographic Detail Report

Bldg E

2510 84th St S, Tacoma, WA 98409

Building Type: **Retail**
 Secondary: -
 GLA: **37,248 SF**
 Year Built: **1988**

Total Available: **1,053 SF**
 % Leased: **97.17%**
 Rent/SF/Yr: **\$16.00**



Radius	1 Mile	3 Mile	5 Mile
Population			
2014 Projection	16,544	120,913	265,515
2009 Estimate	16,174	116,170	255,817
2000 Census	15,733	108,974	241,918
Growth 2009 - 2014	2.30%	4.10%	3.80%
Growth 2000 - 2009	2.80%	6.60%	5.70%
2009 Population by Age	16,174	116,170	255,817
Age 0 - 4	1,594 9.86%	9,678 8.33%	19,800 7.74%
Age 5 - 9	1,279 7.91%	8,401 7.23%	17,903 7.00%
Age 10 - 14	1,115 6.89%	7,600 6.54%	16,870 6.59%
Age 15 - 17	602 3.72%	4,578 3.94%	10,484 4.10%
Age 18 - 20	766 4.74%	6,092 5.24%	12,531 4.90%
Age 21 - 24	1,136 7.02%	8,078 6.95%	16,435 6.42%
Age 25 - 34	2,753 17.02%	18,123 15.60%	37,595 14.70%
Age 35 - 44	1,972 12.19%	15,145 13.04%	33,005 12.90%
Age 45 - 49	1,001 6.19%	7,932 6.83%	17,943 7.01%
Age 50 - 54	891 5.51%	7,259 6.25%	16,891 6.60%
Age 55 - 59	781 4.83%	6,197 5.33%	14,552 5.69%
Age 60 - 64	591 3.65%	4,814 4.14%	11,645 4.55%
Age 65 - 74	827 5.11%	6,198 5.34%	15,112 5.91%
Age 75 - 84	615 3.80%	4,326 3.72%	10,609 4.15%
Age 85 and over	251 1.55%	1,748 1.50%	4,443 1.74%
Age 16 and over	11,992 74.14%	88,985 76.60%	197,768 77.31%
Age 18 and over	11,583 71.61%	85,913 73.95%	190,760 74.57%
Age 21 and over	10,817 66.88%	79,821 68.71%	178,229 69.67%
Age 65 and over	1,693 10.47%	12,273 10.56%	30,164 11.79%
Median Age	30.40	32.30	33.90
Average Age	33.60	34.90	36.00

Demographic Detail Report

Bldg E						
2510 84th St S, Tacoma, WA 98409						
Radius	1 Mile		3 Mile		5 Mile	
2009 Population By Race	16,174		116,170		255,817	
White	7,268	44.94%	67,135	57.79%	155,540	60.80%
Black or African American	3,183	19.68%	16,491	14.20%	34,532	13.50%
American Indian and Alaska Native	231	1.43%	1,857	1.60%	4,461	1.74%
Asian	2,527	15.62%	12,775	11.00%	26,307	10.28%
Native Hawaiian and Pacific Islander	433	2.68%	2,074	1.79%	3,589	1.40%
Other Race	931	5.76%	5,475	4.71%	10,788	4.22%
Two or More Races	1,601	9.90%	10,362	8.92%	20,600	8.05%
2009 Population by Hispanic Origin	16,174		116,170		255,817	
Not Hispanic or Latino	13,955	86.28%	103,384	88.99%	230,105	89.95%
Hispanic or Latino:	2,220	13.73%	12,786	11.01%	25,712	10.05%
Mexican	1,379	8.53%	8,151	7.02%	16,495	6.45%
Puerto Rican	339	2.10%	1,834	1.58%	3,362	1.31%
Cuban	21	0.13%	134	0.12%	323	0.13%
Other Hispanic or Latino	480	2.97%	2,667	2.30%	5,532	2.16%
2009 Age 5+ Language at Home	14,578		106,492		236,017	
Speak Only English	10,683	73.28%	86,121	80.87%	194,356	82.35%
Speak Asian or Pacific Island	2,381	16.33%	10,831	10.17%	20,886	8.85%
Speak IndoEuropean	456	3.13%	3,366	3.16%	7,386	3.13%
Speak Spanish	1,006	6.90%	5,975	5.61%	12,809	5.43%
Speak Other Language	52	0.36%	199	0.19%	580	0.25%
2009 Median Age, Male	29.30		31.30		32.60	
2009 Average Age, Male	32.00		33.60		34.70	
Median Age, Female	31.40		33.30		35.20	
Average Age, Female	35.10		36.00		37.20	
2009 Population by Employment Status (Age 16+)	11,991		88,984		197,768	
In Armed Forces	410	3.42%	2,107	2.37%	5,134	2.60%
Civilian, Employed	5,834	48.65%	45,498	51.13%	99,948	50.54%
Civilian, Unemployed	1,143	9.53%	8,524	9.58%	17,639	8.92%
Not In Labor Force	4,604	38.40%	32,855	36.92%	75,047	37.95%
2009 Population by Occupation Classification (Age 16+)	5,835		45,498		99,949	
Blue Collar	1,540	26.39%	11,510	25.30%	23,232	23.24%
White Collar	2,562	43.91%	22,799	50.11%	53,760	53.79%
Service	1,733	29.70%	11,189	24.59%	22,957	22.97%

Demographic Detail Report

Bldg E						
2510 84th St S, Tacoma, WA 98409						
Radius	1 Mile		3 Mile		5 Mile	
2000 Population by Marital Status (Age 15+)	12,186		90,490		201,245	
Total, Never Married	3,529	28.96%	28,003	30.95%	59,682	29.66%
Married	5,842	47.94%	42,290	46.73%	98,340	48.87%
Widowed	831	6.82%	5,720	6.32%	12,964	6.44%
Divorced	1,984	16.28%	14,477	16.00%	30,259	15.04%
Males Divorced	693		5,391		11,224	
Females Divorced	1,089		7,235		15,107	
Males, Never Married	1,615		12,882		27,820	
Females Never Married	1,496		11,028		23,332	
2009 Population by Education	9,681		71,743		161,796	
Less Than 9Th Grade	687	7.10%	3,751	5.23%	8,108	5.01%
Some High School, No Diploma	1,084	11.20%	7,306	10.18%	15,624	9.66%
High School Graduate (Includes Equivalency)	3,549	36.66%	25,600	35.68%	51,482	31.82%
Some College, No Degree	2,311	23.87%	18,080	25.20%	40,812	25.22%
Associate Degree	855	8.83%	6,453	8.99%	15,040	9.30%
Bachelor Degree	776	8.02%	7,053	9.83%	19,739	12.20%
Advanced Degrees	419	4.33%	3,500	4.88%	10,991	6.79%
2009 Population by Occupation (Age 16+)	7,568		56,686		122,904	
Management, Business, & Financial	1,266	16.73%	11,560	20.39%	26,098	21.23%
Professional & Related Occupations	254	3.36%	1,585	2.80%	4,293	3.49%
Services	4,197	55.46%	29,358	51.79%	62,730	51.04%
Sales & Office	573	7.57%	4,708	8.31%	10,558	8.59%
Farming, Fishing, and Forestry	35	0.46%	146	0.26%	402	0.33%
Construction and Extraction, Maint	240	3.17%	2,997	5.29%	6,052	4.92%
Production & Transportation	1,003	13.25%	6,332	11.17%	12,771	10.39%
2009 Workers by Travel Time to Work (Age 16+)	6,244		47,606		105,082	
Less Than 15 Minutes	1,642	26.30%	12,759	26.80%	27,635	26.30%
15 to 29 Minutes	2,600	41.64%	19,710	41.40%	43,296	41.20%
30 to 44 Minutes	1,003	16.06%	7,773	16.33%	17,710	16.85%
45 to 59 Minutes	378	6.05%	3,196	6.71%	7,040	6.70%
60+ Minutes	621	9.95%	4,168	8.76%	9,401	8.95%

Demographic Detail Report

Bldg E			
2510 84th St S, Tacoma, WA 98409			
Radius	1 Mile	3 Mile	5 Mile
Households			
2014 Projection	6,477	46,563	102,036
2009 Estimate	6,326	44,636	98,007
2000 Census	6,173	41,693	91,988
Growth 2009 - 2014	2.40%	4.30%	4.10%
Growth 2000 - 2009	2.50%	7.10%	6.50%
2000 Households by HH Size	6,174	41,691	91,989
1-Person Households	1,723 27.91%	11,550 27.70%	24,987 27.16%
2-Person Households	1,932 31.29%	13,219 31.71%	29,513 32.08%
3-Person Households	1,105 17.90%	7,153 17.16%	15,535 16.89%
4-Person Households	762 12.34%	5,327 12.78%	12,091 13.14%
5-Person Households	367 5.94%	2,585 6.20%	5,756 6.26%
6-Person Households	175 2.83%	1,110 2.66%	2,387 2.59%
7 or more Person Households	110 1.78%	747 1.79%	1,720 1.87%
2009 Average Household Size	2.54	2.55	2.55
2009 Households by HH Income	6,326	44,635	98,007
Income Less than \$15,000	999 15.79%	5,725 12.83%	12,100 12.35%
Income: \$15,000 - \$24,999	861 13.61%	4,950 11.09%	10,731 10.95%
Income: \$25,000 - \$34,999	996 15.74%	5,461 12.23%	11,045 11.27%
Income: \$35,000 - \$49,999	1,217 19.24%	8,984 20.13%	18,034 18.40%
Income: \$50,000 - \$74,999	1,320 20.87%	10,647 23.85%	22,803 23.27%
Income: \$75,000 - \$99,999	550 8.69%	5,114 11.46%	11,998 12.24%
Income: \$100,000 - \$149,999	316 5.00%	2,919 6.54%	8,337 8.51%
Income: \$150,000 - \$249,999	59 0.93%	718 1.61%	2,431 2.48%
Income: \$250,000 - \$499,999	7 0.11%	103 0.23%	467 0.48%
Income: \$500,000 or more	1 0.02%	14 0.03%	61 0.06%
2009 Avg Household Income	\$45,412	\$52,206	\$56,696
2009 Med Household Income	\$38,270	\$44,825	\$47,269
2009 Per Capita Income	\$17,799	\$20,485	\$22,111
2009 Occupied Housing	6,326	44,636	98,006
Owner Occupied	2,468 39.01%	22,121 49.56%	51,338 52.38%
Renter Occupied	3,858 60.99%	22,515 50.44%	46,668 47.62%

Demographic Detail Report

Bldg E

2510 84th St S, Tacoma, WA 98409

Radius	1 Mile		3 Mile		5 Mile	
2009 Housing Value - Owner Occupied	2,469		22,120		51,339	
Value Less than \$20,000	243	9.84%	604	2.73%	948	1.85%
Value \$20,000 - \$39,999	150	6.08%	386	1.75%	721	1.40%
Value \$40,000 - \$59,999	71	2.88%	242	1.09%	467	0.91%
Value \$60,000 - \$79,999	43	1.74%	211	0.95%	522	1.02%
Value \$80,000 - \$99,999	27	1.09%	419	1.89%	1,053	2.05%
Value \$100,000 - \$149,999	286	11.58%	3,479	15.73%	6,466	12.59%
Value \$150,000 - \$199,999	740	29.97%	7,658	34.62%	13,803	26.89%
Value \$200,000 - \$299,999	773	31.31%	6,752	30.52%	16,384	31.91%
Value \$300,000 - \$399,999	122	4.94%	1,608	7.27%	6,954	13.55%
Value \$400,000 - \$499,999	5	0.20%	378	1.71%	1,691	3.29%
Value \$500,000 - \$749,999	0	0.00%	263	1.19%	1,536	2.99%
Value \$750,000 - \$999,999	4	0.16%	50	0.23%	378	0.74%
Value \$1,000,000 or more	5	0.20%	70	0.32%	416	0.81%
2009 Med Housing Val-Owner Occupied	\$174,732		\$186,022		\$207,995	
2000 Housing Units by Units in Structure	6,680		44,404		97,602	
1 Unit Attached	90	1.35%	1,301	2.93%	4,291	4.40%
1 Unit Detached	2,397	35.88%	25,409	57.22%	57,667	59.08%
2 Units	166	2.49%	1,652	3.72%	3,604	3.69%
3 - 19 Units	2,292	34.31%	9,736	21.93%	18,962	19.43%
20 - 49 Units	584	8.74%	2,347	5.29%	4,745	4.86%
50 or more Units	489	7.32%	2,134	4.81%	4,967	5.09%
Mobile Home or Trailer	649	9.72%	1,763	3.97%	3,208	3.29%
Boat, RV, Van, Etc.	13	0.19%	62	0.14%	158	0.16%
2009 Housing Units by Yr Built	7,028		48,315		105,956	
Built 1999 to Present	376	5.35%	4,579	9.48%	10,042	9.48%
Built 1995 to 1998	345	4.91%	2,516	5.21%	4,784	4.52%
Built 1990 to 1994	449	6.39%	2,853	5.90%	5,988	5.65%
Built 1980 to 1989	1,625	23.12%	6,520	13.49%	13,885	13.10%
Built 1970 to 1979	1,581	22.50%	7,494	15.51%	17,943	16.93%
Built 1960 to 1969	1,236	17.59%	6,549	13.55%	16,093	15.19%
Built 1950 to 1959	510	7.26%	6,247	12.93%	13,133	12.39%
Built 1940 to 1949	486	6.92%	4,603	9.53%	9,218	8.70%
Built 1939 or Earlier	420	5.98%	6,954	14.39%	14,870	14.03%
2009 Median Year Built	1975		1970		1970	